

Eastspring Asset Management (Thailand) Co., Ltd.

Information as of 31 MARCH 2025

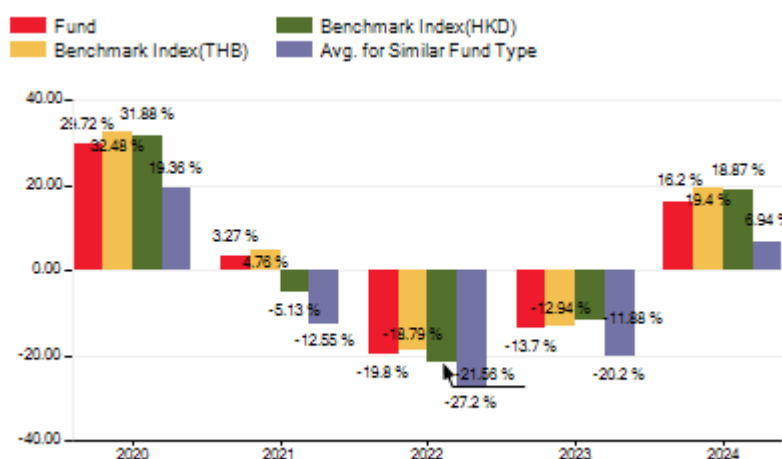
## Fund Type / Group

- ▶ Equity Fund
- ▶ Feeder Fund
- ▶ Group Greater China Equity

## Investment Policy and Strategy

- ▶ mainly invest in an off-shore mutual fund, iShares FTSE A50 China Index ETF, Fund aims to achieve returns that are in-line with performance of the FTSE China A 50 Net Total Return Index and managed by BlackRock Asset Management North Asia Limited
- ▶ The fund's investment strategy : passive management/ index tracking

## Calendar year performance and benchmarks over the past five years (% per annum)



## Past performance at specific periods (% per annum)

	YTD	3 Month	6 Month	1 Year
Fund	-1.65	-1.65	-2.99	4.19
Benchmark Index (THB)	-1.82	-1.82	-2.63	6.18
Benchmark Index (HKD)	-1.09	-1.09	-7.46	13.54
Avg. for Similar Fund Type	6.10	6.10	0.63	16.39
Fund's Volatility	18.67	18.67	33.83	28.11
Benchmark's Volatility (THB)	16.99	16.99	23.39	21.76
Benchmark's Volatility (HKD)	17.37	17.37	23.14	21.96

	3 Year	5 Year	10 Year	Since Inception
Fund	-3.46	2.31	1.77	-2.58
Benchmark Index (THB)	-1.94	3.98	2.37	-1.16
Benchmark Index (HKD)	-2.73	3.38	1.98	-1.09
Avg. for Similar Fund Type	-7.99	-3.14	-1.52	-
Fund's Volatility	23.18	23.67	25.03	29.46
Benchmark's Volatility (THB)	20.24	21.05	22.68	25.88
Benchmark's Volatility (HKD)	20.43	21.34	22.96	26.17

## Risk Level

Low 1 2 3 4 5 6 7 8 High

## Description of Risks

Core investments are equities, averaging at least 80% of NAV during the financial year.

## About the Fund

Fund Registration Date	28 SEP 2007
Unit Class Launch Date	-
Dividend Payment	No Including Dividend
Auto Redemption	-
Maturity	No

## Fund Manager

Ms. Ruchira Khempeth ( Since 27 OCT 2022 )  
Mr. Paripon Sriboon ( Since 01 NOV 2023 )

## Benchmark :

1. FTSE China A 50 Net Total Return Index 100%

Remark : In terms of HKD and in terms of THB

For past performance that less than 1 year, calculated based on the actual period.

## Importance Notice :

- ▶ Investments in the mutual fund are not deposits
- ▶ The mutual fund's past performance does not guarantee future results.

Anti-Corruption: Under supervision by the parent company to comply with law

Rated by Morningstar ★★★★★

Full Prospectus



Investors may review details about liquidity management tools in the fund's full prospectus.

[www.eastspring.co.th](http://www.eastspring.co.th)

**Purchase Units**

Trading Days : every working day  
 Trading Hours : 08:30 am -14:30 pm  
 Min Initial Purchase : 1 Baht  
 Min Subsequent Purchase : 1 Baht

**Redeem Units**

Trading Days : every working day  
 Trading Hours : 08:30 am -14:30 pm  
 Minimum Redemption : 1 Baht  
 Min Balance Required : No  
 Settlement Period : T+2

**Analytic Data**

Maximum Drawdown	-42.00%
Recovering Period	N/A
FX Hedging	N/A
Turnover Ratio	12.10%
Sharpe Ratio	-0.22%

**Fees to be charged to the fund (% of NAV per annum)**

Fees	Not Exceeding	Actual
Management	1.0000	0.9970
Total Expenses*	1.2000	1.1291

Remark : Total Expenses in the fiscal year of 1 Nov 22 - 31 Oct 23 , Additional fees charged can be found in the prospectus.

**Fees to be charged to unitholders (% of the investment unit value)**

Fees	Not Exceeding	Actual
Purchase	None	None
Redeem	Waive Fee	Waive Fee
Switch-In	None	None
Switch-Out	Waive Fee	Waive Fee
Transfer	5 Baht per 1,000 Units	5 Baht per 1,000 Units

Remark: Spread charged from UH who make this transaction(Spread will be transferred to or become the property of the fund in the whole amount to be used to pay for the fund's securities trading expenses) does not exceed 0.75%, the actual fee charged is 0.10%

**Portfolio Breakdown**

Asset	% NAV
Equity Fund	99.39
Savings Deposit	0.84
Other Liabilities	-0.23

**Top 5 Holdings**

Asset	% NAV
iShares FTSE China A50 ETF	99.39

Invest over 20%

Fund Name : iShares FTSE China A50 ETF

ISIN code : HK2823028546

Bloomberg code : 2823 HK EQUITY

## GLOSSARY

**Maximum Drawdown:** the fund's largest percentage loss over the past 5 years (or since inception if the fund has been operating for less than 5 years) measured from peak NAV/unit to lowest NAV/unit during a decline. The Maximum Drawdown helps provide some indication of the risk of potential loss when investing in the fund.

**Recovery Period:** the time it takes to regain losses; this data provides information about how long it took to climb back from the largest loss to a former peak.

**FX Hedging:** the percentage of foreign investments that are hedged against foreign exchange risk.

**Portfolio Turnover:** illustrates how active the portfolio is traded during a particular period. This is calculated by dividing the value of total purchases in 1 year or the value of total sales in 1 year, whichever is lower, by the fund's average NAV over the same period being measured. A fund with a high Portfolio Turnover ratio denotes that its portfolio managers actively trades the securities in the portfolio; this incurs considerable trading costs which should be taken into consideration in comparison with the performance of fund to ascertain whether the active trading activity is well justified.

**Sharpe Ratio:** the ratio between excess return achieved by the fund compared to investment risks taken. It is determined from the difference between the fund's return and the Risk-Free Rate, compared to the fund's volatility (Standard Deviation). The Sharpe Ratio reflects the excess return the fund generates given its risk exposure. A fund with a higher Sharpe Ratio denotes a better-managed fund since it is able to generate a higher return over a similar risk exposure.

**Alpha:** excess return generated by the fund when compared to its benchmark index. A high Alpha figure illustrates that the fund is able to achieve a higher return than the benchmark due to the fund managers' ability to select good investments and appropriate timing.

**Beta:** magnitude and direction of the performance of securities in the portfolio relative to the market's return. A Beta lower than 1 denotes that the return of the securities in the portfolio is less sensitive to changes in the market's return. A Beta higher than 1 indicates that the return of the securities in the portfolio deviates by a larger magnitude in comparison to changes in the market's return.

**Tracking Error:** the fund's ability to replicate the performance of its benchmark index is measured as Tracking Error. A low figure shows that the fund can efficiently match the benchmark's movement and generate similar performance. A fund with a high tracking error will generally have average returns that deviate from the benchmark index.

**Yield to Maturity:** the return from investment in a fixed income instrument that is held until maturity. It is calculated from the stream of coupon payments to receive in the future plus the principal to be paid back, adjusted into present value terms. It indicates the overall return of a fixed income fund by summing the weighted average Yield to Maturity of each fixed income instrument in the portfolio. Since Yield to Maturity is expressed as a percentage per annum, it can be conveniently used to compare fixed income funds which will hold their debt securities until maturity and have similar investment policies.

The management company reserves the right to charge different fees for front-end fees and/or back-end fees and/or switching-fees investment units for each group of investors. The management company will exempt such fees for institutional investors who open investment unit trading accounts directly with the management company, including non-profit institutional investors established under the Securities and Exchange Act B.E. 2535, institutional investors established under the Social Security Act B.E. 2533, life and non-life insurance businesses, specialized banks, provident funds under the management of Eastspring Asset Management, investment unit accounts linked to life insurance policies or so-called life insurance policies linked to investment units (Unit-linked) of life insurance companies that Eastspring Asset Management has assigned to support the sale or repurchase.

In the event that the Management Company is unable to deliver funds to unitholders through the channels that the unitholders have requested, the Management Company reserves the right to transfer funds (deliver funds) to unitholders through other channels, such as transferring funds via the PromptPay system (citizen ID card number), etc., or any other methods that the Management Company deems appropriate, with the unitholders' interests as the main priority, so that unitholders receive the refunds to their rights.



Eastspring Asset Management (Thailand) Company Limited  
9th FL., Mitrtown Office Tower, 944  
Rama IV Rd., Wangmai, Pathumwan,  
Bangkok 10330, Thailand